



NEWTECH INFOSYSTEMS, INC.

---

Dragon Burn™

# Dragon Burn

## User's Guide

# Dragon Burn User's Guide

---

© NewTech Infosystems, Inc.  
5 Mason Avenue, Suite 150  
Irvine, CA 92618  
Telephone 949.421.0720 • Fax 949.421.0750

---

## **Copyright**

The Dragon Burn™ software and the contents of this associated User Manual are the property of NEWTECH INFOSYSTEMS, INC. (**NTI**) and are protected by copyright. Any reproduction either in whole or in part is strictly prohibited. For additional copies of the software or this documentation, please contact NTI.

Software as well as many other types of works are protected by international copyright laws. Unauthorized copying of those works in any manner may violate the rights of the owner of the copyright in those works and may expose you to civil and criminal penalties.

You may not use Dragon Burn software to violate the copyright rights of others. NTI does not authorize you to use the Dragon Burn™ software for the purpose of violating the copyright rights of others.

Information in this document is subject to change without notice.

## **Trademarks**

Dragon Burn™ is a registered trademark of NewTech Infosystems, Inc. NTI CD-Maker Elite, NTI CD-Maker Pro, NTI CD-Maker, NTI CD-Maker MM, NTI CD-Maker Video, NTI CD-Copy Tools, CDR Explorer, NTI JewelCase Maker, NTI FileCD, EasySteps, and Overburn are trademarks of NewTech Infosystems, Inc. Windows is a trademark of Microsoft Corporation. All other product names or trademarks are property of their respective owners.

## **License**

Use of this software constitutes your acceptance of these terms and conditions and your agreement to abide by them. You, the original purchaser, are granted a non-transferable, non-exclusive personal license to use the software. You may neither transfer the software or otherwise make it available to anyone else, nor may you copy, modify, disassemble, decompile, reverse engineer, revise or enhance the software, electronically transfer, or lease the software or this user manual.

You may terminate this agreement at any time by destroying the software. This agreement will Use of this Software constitutes your acceptance of these terms and conditions and also terminate if you fail to comply with the terms and conditions of this agreement. You agree upon such termination to destroy the software.

## **Limited Warranty**

NewTech Infosystems, Inc. warrants for a period of thirty (30) days from the date of delivery that, under normal use and without unauthorized modification, the program performs in substantial compliance with the User Manual and those set forth in NewTech Infosystems, Inc. authorized advertising material; that under normal use, the magnetic media upon which the software is distributed is substantially free from significant defects in materials and workmanship. Warranty claims must be made in writing during the Warranty Period and within seven (7) days of the observation of the defect, accompanied by evidence satisfactory to NewTech Infosystems, Inc. If NewTech Infosystems, Inc. is unable to correct it within ninety (90) days of the date you report the defect, you may return the software and accompanying materials to NTI distributor from where they were purchased (if not purchased directly from NewTech Infosystems, Inc.) and shall be shipped by the returning party with freight and insurance paid.

EXCEPT AS STATED ABOVE, THERE IS NO OTHER WARRANTY, EXPRESSED OR IMPLIED, REGARDING THE PRODUCT INCLUDING, BUT NOT LIMITED TO, THE IMPLIED WARRANTIES OF MERCHANTABILITY AND FITNESS FOR A PARTICULAR PURPOSE.

---

### **Limit Of NewTech Infosystems, Inc. Liability**

NewTech Infosystems, Inc. entire liability for damages to you or any other party for any cause whatsoever, whether in contract or in tort, including negligence, shall not exceed the price you paid for the unit of the software that caused the damages or that are the subject matter of, or are directly related to, the cause of action. In no event will NewTech Infosystems, Inc. be liable for any damages caused by your failure to perform your obligations, or for any loss of data, profits, savings, or any other consequential and incidental damages, even if NewTech Infosystems, Inc. has been advised of the possibility of damages, or for any claims by you based on any third-party claim.

### **Changes**

With reasonable efforts have been made in the preparation of this documentation to assure its accuracy, NTI assumes no liability resulting from errors or omissions in this document or from the use of the information contained herein.

### **NOTICE**

NTI's Dragon Burn software is designed to assist you in reproducing material in which you own the copyright or have obtained permission to copy from the copyright owner.

NTI does not authorize you to use the software for the purpose of violating the copyright rights of others. Violating the copyright rights of others may result in severe civil and criminal penalties and may be prosecuted to the maximum extent possible under the law.

NEWTECH INFOSYSTEMS, INC. takes no responsibility for any illegal use of the product. If you are not sure about your rights, please consult your legal advisor before using NTI software.

### **Termination**

Your failure to comply with the terms in this Agreement shall terminate your license and this Agreement.

### **U.S. GOVERNMENT RESTRICTED RIGHTS.**

The Software and user documentation is provided with RESTRICTED RIGHTS AND LIMITED RIGHTS. Use, duplication, or disclosure by the Government is subject to restrictions as set forth in subparagraph (c)(1)(ii) of the Rights in Technical Data and Computer Software clause at DFARS 252.227-7013 or subparagraphs (c)(1) and (2) of the Commercial Computer Software--Restricted Rights at 48 CFR 52.227-19, as applicable. NewTech Infosystems, Inc., 5 Mason Avenue, Suite 150, Irvine, CA 92618 U.S.A.

# Table of Contents

## CHAPTER 1

<b>INTRODUCTION .....</b>	<b>1</b>
<b>FIRST THINGS FIRST .....</b>	<b>3</b>
HOW TO USE THIS GUIDE.....	3
<i>Chapter 1: Introduction</i> .....	3
<i>Chapter 2: Copying a CD</i> .....	3
<i>Chapter 3: Creating your own CD</i> .....	3
<i>Chapter 4: Reference</i> .....	3
DRAGON BURN FEATURES .....	3
SYSTEM REQUIREMENTS .....	4
SOFTWARE INSTALLATION .....	5

## CHAPTER 2

<b>COPYING A CD.....</b>	<b>7</b>
GETTING STARTED.....	8
STARTING DRAGON BURN.....	9
ABOUT COPYING CDS.....	9
USING THE CONTROL TABS .....	10
CD COPY OVERVIEW .....	10
CD COPY PROCEDURE .....	10
OPTIONS SETTINGS.....	15
USING A DISC IMAGE FILE .....	16
USING A CD COPY LAYOUT .....	16
CREATING A DISC IMAGE FILE .....	16
MAKING A CD WITH A DISC IMAGE FILE .....	18

## CHAPTER 3

<b>CREATING YOUR OWN CD .....</b>	<b>19</b>
GETTING STARTED.....	21
SUPPORTED CD FORMAT TYPES .....	21
CREATING A DATA CD.....	21
SAVING A CD LAYOUT .....	26
OPENING A SAVED CD LAYOUT.....	26
CREATING AN AUDIO CD.....	27
CREATING A MIXED MODE CD.....	30
CREATING A CD EXTRA DISC .....	32

---

EXTRACTING AUDIO FILES .....	35
DISPLAYING DISC INFORMATION .....	35
USING RE-WRITABLE DISCS .....	37
SPECIFYING FILE FORMATS .....	38
FILE FORMAT OPTIONS .....	39
<b>CHAPTER 4</b>	
<b>REFERENCE .....</b>	<b>40</b>
INTRODUCTION.....	42
CONTACTING NEWTECH INFOSYSTEMS, INC.....	42
TROUBLESHOOTING .....	42
<b>GLOSSARY .....</b>	<b>45</b>
<i>AIFF</i> .....	45
<i>Blank Media</i> .....	45
<i>CD-DA</i> .....	45
<i>CD Extra</i> .....	45
<i>CD Media</i> .....	45
<i>Disc-At-Once</i> .....	45
<i>Hybrid</i> .....	45
<i>ISO9660 Format</i> .....	45
<i>Joliet</i> .....	45
<i>Lead-In Area</i> .....	45
<i>Lead-Out Area</i> .....	46
<i>Mixed Mode CD</i> .....	46
<i>MPEG-1, Layer 3 (.mp3)</i> .....	46
<i>Session</i> .....	46
<i>Session-At-Once</i> .....	46
<i>Table of Contents (TOC)</i> .....	46
<i>Track-At-Once</i> .....	46
<i>Wave</i> .....	46
<i>Write Disc</i> .....	46
<i>Write Session</i> .....	46
<b>INDEX .....</b>	<b>47</b>

---



# Introduction

## **Chapter 1 — Topics of discussion**

First Things First  
How to Use This Guide  
Dragon Burn Features  
System Requirements  
Software Installation



# First Things First

Congratulations on your purchase of Dragon Burn™. This User's Guide explains the features of Dragon Burn, its Macintosh® system requirements, and how to use Dragon Burn to create your own CDs.

## How to Use This Guide

This *Dragon Burn User's Guide* includes four chapters, a Table of Contents, a Glossary, and an Index.

### Chapter 1: Introduction

This chapter explains the features of Dragon Burn, system requirements, and how to install the Dragon Burn software.

### Chapter 2: Copying a CD

This chapter explains how to copy an existing CD, and the options and settings that are available for the copy process.

### Chapter 3: Creating your own CD

This chapter explains how to create a CD with your own custom contents, and all of the settings and options that correspond to your custom CD.

### Chapter 4: Reference

This chapter includes a Troubleshooting section and contact information in case you need additional help.

## Dragon Burn Features

Dragon Burn™ is a powerful, yet easy to use utility for creating CD-R (CD-Recordable) or CD-RW (CD-ReWritable) discs.

- Create backup copies of your Macintosh files, folders or volumes. Use CD-R media if you want to create a permanent archive of your files. Alternatively, use CD-RW media if you want to be able to update or add to your files.
- Create copies of your audio, data, mixed mode or CD Extra CDs. Dragon Burn can create backup copies of your existing CDs.
- Create Audio CDs from your favorite AIFF, CDDA, MP3 or WAV files.
- Extract your favorite audio tracks to AIFF or WAV files.
- Easy "tabbed pane" system enables you to quickly step through the options available for creating your CDs. The Dragon Burn windows step you through the process of selecting the options and settings that you want for your CD. If you accidentally miss an important setting, Dragon Burn automatically detects the missing setting and can move you to the tabbed pane to add the missing setting.
- Fast "drag and drop" support enables you to use the Macintosh Finder to choose the files and folders that you want to include on your CD. Simply drag the Finder icons into the Dragon Burn window to choose the contents of your CD.

## INTRODUCTION

- Create an "image file" that represents the entire contents of a CD. An image file can be used to create additional copies of the CD during subsequent work sessions.
- Create and save a Layout of your Dragon Burn settings, as well as particular files and folders to be copied. The Layout feature makes it quick and easy to use Dragon Burn for creating archive copies of your important data.
- Supports multiple file system formats. With Dragon Burn, you can create CDs in the standard Macintosh disc format. You can also create CDs in the ISO9660 format used by Windows computers, so you can open and use your files on those types of computers. You can also create "hybrid" CDs that contain a combination of the two disc formats.
- Includes potential error and status reporting. Dragon Burn automatically creates a Log that shows potential errors, warnings and notes that relate to the disc creation process. You can view, print, or save the Log as a file on your Macintosh.
- Accommodates a wide range of CD-recorder devices. For the latest list of compatible devices, refer to <http://www.ntius.com/support/supdrives.cfm> on the Internet.
- Supports SCSI-based, USB 1.0 and FireWire-based CD-writers. Dragon Burn supports the highest-performance CD-writers available.

### System Requirements

To use Dragon Burn, your Macintosh system must consist of the following:

- Macintosh computer with Power PC processor. This includes the G3 and G4 Macintosh systems.
- Macintosh System 9.1 or higher (which means a higher number).
- 32MB of RAM
- 2MB of free disk space for software installation
- Compatible CD-burner correctly installed or connected to your Macintosh.
- CD-ROM drive, for installing the software and making a direct copy of an existing CD
- \*(Optional) 700MB of free disk space to create a disc image file.

## INTRODUCTION

### Software Installation

The Dragon Burn software is included on the Dragon Burn Software CD. Installation is easy, and should take less than a minute.



#### To install the Dragon Burn software:

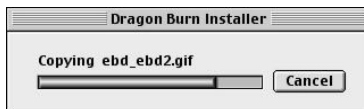
1. Insert the *Dragon Burn Software CD* into the CD drive. In a moment, an icon is displayed on your desktop for the newly mounted CD.



2. Double-click on the icon to display the Dragon Burn Installer window
3. Double-click on the Install Dragon Burn icon. The Dragon Burn Installer menu is displayed.



4. Click the Install button to launch the Dragon Burn installer.



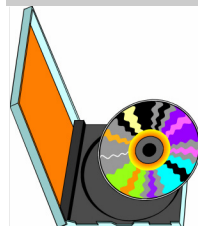
5. Click Ok on the Installation Successful dialog.

### Notes:

- ☞ Click the Change button to install Dragon Burn into another folder on your computer.
- ☞ If you are using Dragon Burn with a FireWire or USB-based CD-writer, you must leave the box checked to install these drivers.
- ☞ If you are using Dragon Burn with a FireWire-based CD-writer, you may be prompted to restart your Macintosh the first time that you run the Dragon Burn application.

Software installation is complete, and you are ready to use Dragon Burn as described in the following chapters.





# Copying a CD

## Getting Started

This chapter explains how to copy an existing CD, and all of the settings and options that you can

### **Chapter 2 — Topics of discussion**

- Getting Started
- Starting Dragon Burn
- About Copying CDs
- Using the Control Tabs
- CD Copy Overview
- CD Copy Procedure
- Options Settings
- Using a Disc Image File
- Using a CD Copy Layout
- Creating a Disc Image File
- Making a CD with a Disc Image File

## COPYING A CD

choose for making a CD copy.

### Note:

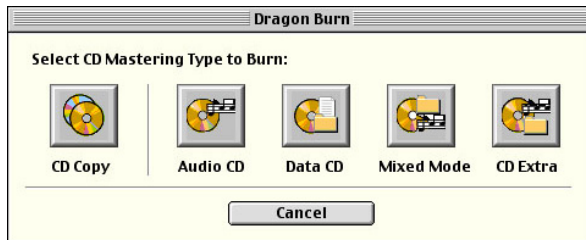
- ➔ This chapter assumes that you have installed the Dragon Burn software as described in the previous chapter. If you haven't installed the software, refer to the [Software Installation](#) section.

## Starting Dragon Burn



To start the Dragon Burn application:

1. Locate the Dragon Burn folder on your hard disk drive. You will find the folder where you installed the software, as described in the section entitled Software Installation.
2. Open the Dragon Burn folder, and double-click the Dragon Burn icon. In a moment, the Dragon Burn window appears, as shown in the following diagram:



### Note:

- ➔ If you are using Dragon Burn with a FireWire-based CD-writer, you may be prompted to restart your Macintosh the first time that you run the Dragon Burn application, or if you have updated your Macintosh system.

3. Click the CD Copy icon to open the "Copy a CD" window.

The Dragon Burn application is now running and ready for use. The following sections of this chapter describe the procedure for copying a CD, and the features and options that are available.

## About Copying CDs

Dragon Burn is designed to make a duplicate of your source CD. You should be aware that there are copyright laws that may apply when you make a copy of a CD especially a CD that contains material you have not personally created. You are solely responsible for complying with all applicable copyright and intellectual property laws associated with the content of any CD. Keep in mind the following:

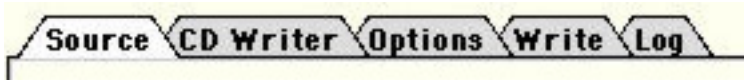
- **Software CDs.** All commercial software is supplied with a Copyright License Agreement. You should carefully review the contents of this agreement before you make a copy of a software CD.
- **Music CDs.** Music CDs that you buy in the store are also covered by copyright protection.
- **Copy Protection.** Many software CDs contain special data encoding that prevents their being copied even by advanced applications such as Dragon Burn. If you attempt to copy a software

## COPYING A CD

CD and receive error or warning messages in the Dragon Burn Log file, it is likely that the CD features copy protection. It may be impossible to create a copy of that CD.

### Using the Control Tabs

The windows that appear in Dragon Burn feature a series of Control Tabs along the top. These Control Tabs appear in sequence according to the settings that you make to create a CD, as shown in the following diagram:



When you make or confirm the settings that appear in each Control Tab, click the next tab in sequence to activate the pane and make the next settings. You can also use the Previous and Next buttons to move among the panes, as shown in the following diagram:



#### Note:

- ☛ For many operations with Dragon Burn, you do not have to make or change settings in each of the Control Tab panes. However, it's a good idea to check the settings and controls "just to be sure" before you create a CD.

### CD Copy Overview

You will perform the following step when you use Dragon Burn to copy a CD:

1. **Choose a Source.** The Source pane automatically lists all the CD players/recorders connected to your Macintosh system. You use this pane to choose the device that has the CD you want to copy.
2. **Choose the CD Writer.** The CD Writer pane lists all CD recorders connected to your Macintosh system. You use this pane to choose the recorder that will create the CD copy or choose CD Image Writer to create an image file of your source CD.
3. **Choose the Recording Options.** If this is the first time you're copying a CD, trying a different recording speed, or have made other changes to your normal copy procedure, you should choose the Simulate Only Mode to test the system. Then choose the recording speed, buffer underrun error protection and eject options.
4. **Write the CD.** If there are no unresolved issues then choose Write Session (potentially leaving room for more data on the CD) or to write the Disc.
5. **Review the Log.** When the copy is complete, the Log pane shows any errors, warnings or notes that relate to the creation of the CD copy.

Each of these steps is described in detail in the following sections of this chapter.

### CD Copy Procedure

#### Note:

- ☛ To directly copy a CD, you need to have two CD drives connected to your Macintosh system: a CD-ROM drive (for the source CD), and a CD-writer drive (to make the copy). You can



## COPYING A CD

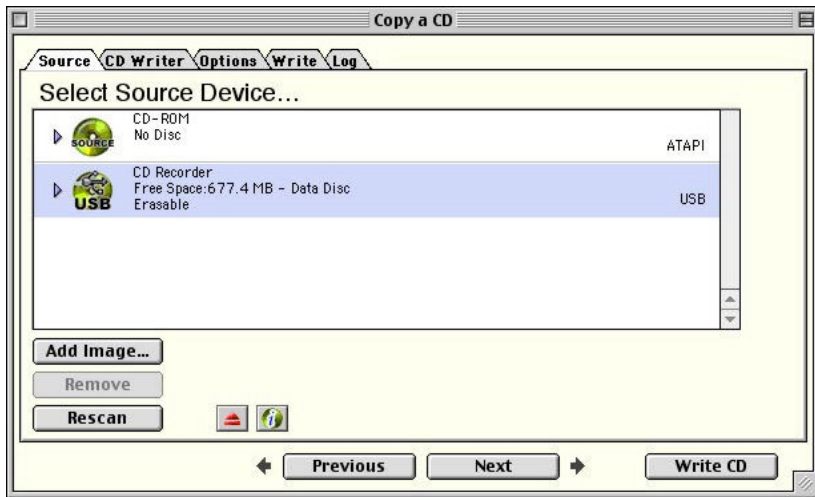
still make a copy if you only have one CD drive by selecting that drive from both the source and CD Writer tabs. Dragon Burn will make a temporary disc image and then prompt you to put a blank CD in your recorder. You will need to have enough free hard disk space to hold the temporary image file when copying a CD from a single drive.

### To copy a CD:

1. If you haven't already done so, start the Dragon Burn application. When you first start Dragon Burn, the Dragon Burn window appears on the screen.

If the Dragon Burn window is not currently on the screen, choose New Layout from the File menu.

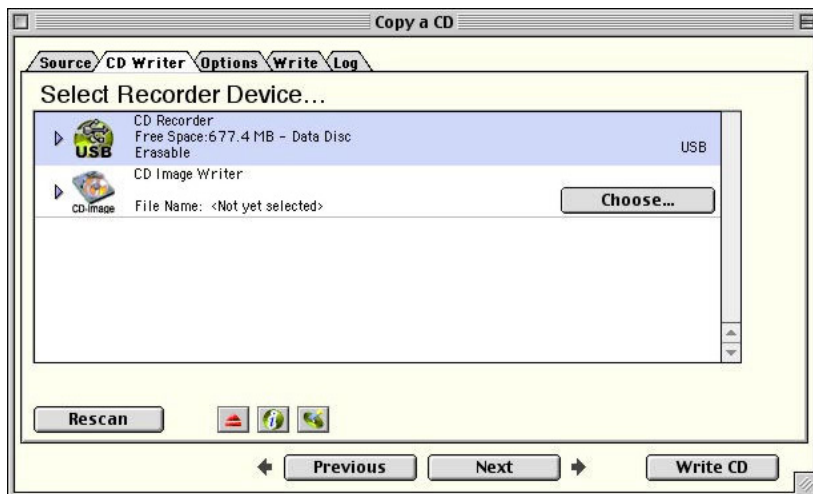
2. Click the CD Copy icon to open the "Copy a CD" window.
3. Insert the source CD (the one you want to copy) into the source drive of your Macintosh.
4. Click the Source tab. The Source pane appears, as shown in the following diagram:



5. Select the CD drive that contains your source CD.

## COPYING A CD

6. Click the CD Writer tab. The CD Writer pane appears, as shown in the following diagram:



7. Click to choose the CD-writer connected to your Macintosh system. If you have more than one CD-writer available, click to choose the one that you want to use.

### Notes:

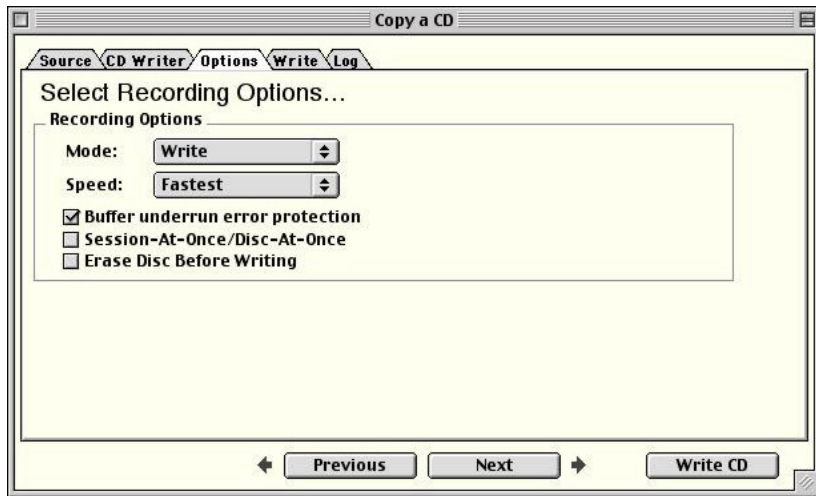
- ☛ If your CD recorder does not appear in this list, click the Show All Devices check box. This will display a list of all the devices (CD-ROM, hard drive, etc.) that are connected to your Macintosh system
  - ☛ You can also select the CD Image Writer to specify that the contents of the CD will be written as a CD Image File. For more information about this option, refer to the section entitled [Using a Disc Image File](#)
8. Press the Eject button on your CD-recorder and insert a blank (recordable) CD into the drive tray. Press the Eject button a second time to close the drive tray, and make the blank CD available for use.

### Note:

- ☛ If you are using a single CD drive you will be prompted to remove the source disc and replace it with a blank piece of CD-R/RW media.

## COPYING A CD

- Click the Options tab. The Options pane appears, as shown in the following diagram:



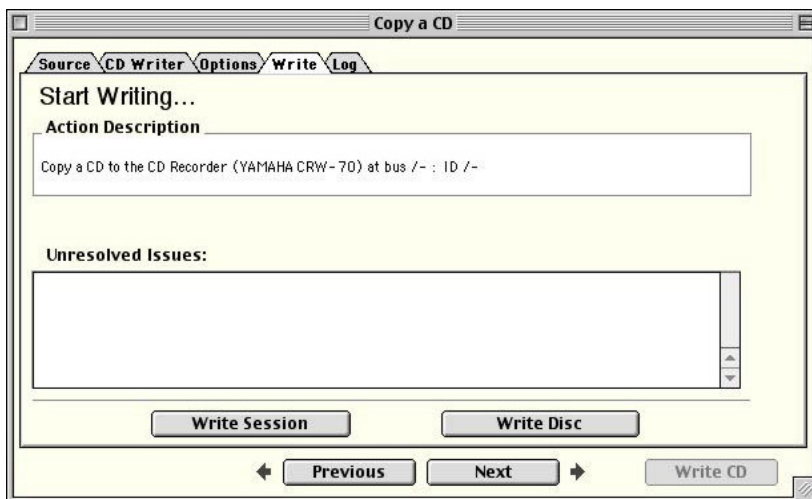
- The first time** you make a copy of a particular kind of CD (audio, data, etc.), select Simulate Only mode. This will cause Dragon Burn to use your Macintosh and the CD-writer mechanism to go through all the actions of making a CD copy *without actually recording to the CD*. Once Dragon Burn has successfully "simulated" the recording, you will return to this step and select the Write mode to create the actual CD.

If you want to specify a recording speed, click on the Recording Speed pop-up menu, and choose the setting that you want to use. The default setting is "Fastest," which sets the CD-writer to record at the fastest speed. More information about choosing a different speed for your CD-writer appears in the section entitled [Troubleshooting](#).

The other settings available in this pane are described in the section entitled [Options Settings](#).

## COPYING A CD

11. Click the Write tab. The Write pane appears, as shown in the following diagram:



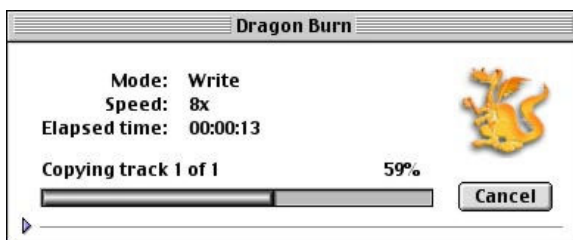
12. Click to choose Write Session or Write Disc:

**Write Session.** This setting instructs Dragon Burn to write the contents of your source CD as a new volume on the destination disc. Depending upon the size of your source CD, this may leave space available for subsequent recording on the CD that you create.

**Write Disc.** This setting instructs Dragon Burn to completely fill your destination CD with the contents of the source CD. This is the normal choice, so that the destination CD becomes a copy of the source CD.

You can find more information about the differences between Write Session and Write Disc in the [Glossary](#).

13. At this point, Dragon Burn begins writing to the CD inserted in your CD-writer drive. A progress window appears, as shown in the following diagram:



**The first time** you are copying a CD; you have selected the Simulate Only setting on the Options pane. In this case, the progress window shows the progress of this simulation, without actually writing to the CD.

14. When Dragon Burn is finished creating your CD copy, the completed disc will eject from your CD-writer drive. Click the Log tab.

## COPYING A CD

The first time you are copying a CD, this Log pane will report the results of the recording simulation. If the Log pane reports "Completed Successfully," return to step #9 and select the Write mode. Repeat the rest of this procedure from step #9.

At this point, your CD copy is complete and ready for use. You should review the contents of the Log pane, and make sure that Dragon Burn hasn't reported any Errors or Warnings that relate to the CD copy you've created.

If you want to create a second (or subsequent) copy of the same CD, click the Write CD button that appears in the Log pane.

This procedure is complete. If there were no Errors or Warnings reported in the Log pane (step #14), you can use your CD copy with your Macintosh the same as you would the original (source) CD.

If Errors or Warnings were reported in step #14, refer to the Troubleshooting section (in Chapter 4: Reference).

## Options Settings

This section describes the settings that are available in the Options pane.

- **Recording Speed.** This pop-up menu enables you to choose the recording speed that will be used for writing the CD. In general, you should leave this set to "Fastest," which will use the highest speed available for your CD-writer depending on the piece of media you are using in that drive. If you receive error messages in the Log pane when simulating or while actually writing a CD, you should experiment with lower speed settings. For example, if your CD-writer is rated at a 6x speed, you should try the 4x setting.

Be aware that some brands of blank CD media (particularly inexpensive brands) may not record reliably at the higher speeds. If you have trouble creating a CD with a certain brand of CD media, try using this menu to choose a lower recording speed or try another brand of media.

- **Mode.** This setting is used to specify the write mode for the recording process. Selecting the Write option will cause the CD recorder to write the data to the CD. Simulate Only causes Dragon Burn to go through all of the procedures of creating an actual CD, and will report any potential errors in the Log pane but no CD is created. Selecting Simulate & Write will cause the first pass to simulate (test) the recording process and then actually write the CD on the second pass.

This setting is useful if you are having problems copying a particular CD, and want to experiment with different settings (such as a lower Recording Speed).

- **Buffer underrun error protection.** This option enables or disables the buffer underrun error correction on the target CD-R/CD-RW recorder. Drives supporting this technology will prevent the creation of bad CDs due to the data flow to the target drive.
- **Session-At-Once/Disc-At-Once.** This option causes Dragon Burn to copy the disc using Session-At-Once when you use the Write Session option and Disc-At-Once when you click the Write Disc from the Write Tab. Dragon Burn will copy your CD using Track-At-Once when this option is unchecked.

## COPYING A CD

- **Erase Disc Before Writing.** If you're working with a CD-RW (CD-re-writable) disc, Dragon Burn offers the option of erasing any previous data that may be on the disc. This allows you to erase all of the data on a CD-RW disc before you write your new data to the disc

### Using a Disc Image File

Dragon Burn gives you the option of writing the contents of an audio, data, mixed-mode or CD Extra CD as a disc image file. A disc image file is a single (usually large) file created on your Macintosh that represents the entire contents of a CD.

The advantage to creating a disc image file is that it can be used to create subsequent disc copies without the source CD. This is particularly useful if you will be making multiple copies of a CD, and may not have access to the original source CD.

### Using a CD Copy Layout

The Copy procedure described previously in this chapter explains how to use all of Dragon Burn's Control Tab panes to copy a CD.



#### To copy a CD using a CD Copy Layout:

1. If you haven't already done so, start the Dragon Burn application. When you first start Dragon Burn, the Dragon Burn window appears on the screen.

If the Dragon Burn window is not currently on the screen, choose New Layout from the File menu.

2. Click the CD Copy icon to open the "Copy a CD" window.
3. Insert the source CD into your CD-ROM drive. An icon for the source CD appears in the Finder desktop.
4. Select the Source drive from the Source pane. The drive will be highlighted when selected.
5. Insert a blank recordable CD into your CD-writer.
6. Click the CD Writer tab and select the target drive or choose CD Image Writer to create an image file of the CD being copied.
7. Select the Option tab if you wish to modify your recording options.
8. Click the Write tab and choose Write Session or Write Disc, as appropriate.
9. When the copy is complete, the Log pane is selected automatically, reporting the results of the CD copy process. The disc is ready for use.

### Creating a Disc Image File



#### To create a disc image file:

1. Make sure that you have enough space on your hard disk drive for the disc image file. The file will be as large as the entire contents of the source CD disc.

To determine the size of the source CD, click on the CD's icon in the Finder, and choose Get Info from the File menu. You must have at least this much free space on a

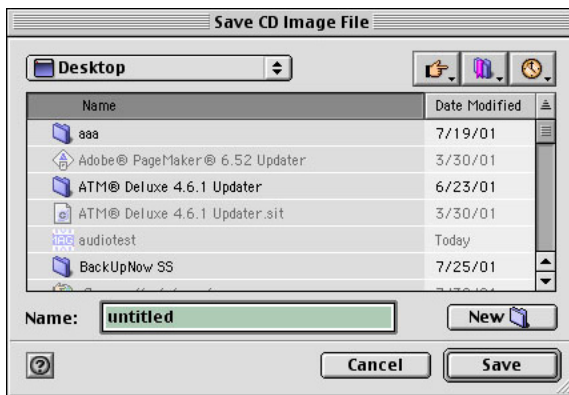
## COPYING A CD

single hard disk drive in your Macintosh. Close the Get Info window when you are finished reviewing the disc information.

2. If you haven't already done so, start the Dragon Burn application. When you first start Dragon Burn, the Dragon Burn window appears on the screen.

If the Dragon Burn window is not currently on the screen, choose New Layout from the File menu.

3. Click the CD Copy icon to open the "Copy a CD" window.
4. Insert the source CD into your CD-ROM drive. An icon for the source CD appears in the Finder desktop.
5. Select the CD drive that contains your source CD.
6. Click the CD Writer tab.
7. Select the CD Image Writer and click the Choose button. A dialog box appears, prompting you to enter a name for the disc image file, as shown in the following diagram:



8. Make sure that the Macintosh disk and folder that is selected has room for the disc image file. If necessary, use the pop-up menu to choose the hard disk drive that you checked in step #1.
9. Enter a name for the disc image file, and then click on the Save button to continue.

You are returned to the CD Writer pane of the Copy a CD window.

10. Select the Option tab if you wish to modify your recording options.
11. Click the Write CD button.
12. Click the Write Disc button.

At this point, the data from the CD you chose in step #4 is written to the disc image file. When the process is complete, the Write pane of the Copy a CD window remains on the screen. You are now ready to use the CD image file to create CDs, as described in the following section.

## COPYING A CD

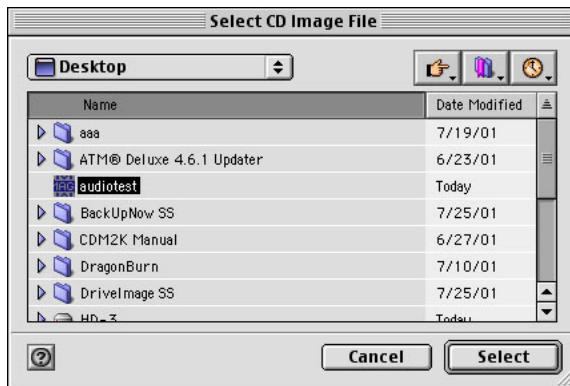
### Making a CD with a Disc Image File

➡ To use a disc image file to create a CD:

1. If you haven't already done so, start the Dragon Burn application. When you first start Dragon Burn, the Dragon Burn window appears on the screen.

If the Dragon Burn window is not currently on the screen, choose New Layout from the File menu.

2. Click the CD Copy icon to open the "Copy a CD" window.
3. Click the Add Image... button. A dialog box appears, prompting you to choose the CD image file, as shown in the following diagram:



4. If necessary, use the pop-up menu to navigate to the folder that contains the CD image file. When you've found the file, click to select it (so it's highlighted), and then click the Select button to continue.
5. Click the CD Writer tab.
6. Select the target CD-R/RW recorder.
7. Select the Option tab if you wish to modify your recording options.
8. Click the Write CD button.
9. Click the Write Disc button.

At this point, all of the data from the CD image file you chose in step #4 is used to create a new CD copy. When the process is complete, the Log pane is selected automatically, showing the results of the Copy procedure.



**Chapter**

**3**



## **Creating your own CD**

### **Chapter 3 — Topics of discussion**

Getting Started  
Supported CD Format Types  
Creating a Data CD  
Getting familiar with Dragon Burn

Saving a CD Layout  
Opening a Saved CD Layout  
Creating an Audio CD  
Creating a Mixed Mode CD  
Creating a CD Extra Disc  
Extracting Audio Files  
Displaying Disc Information  
Using Re-Writable Discs  
Specifying File Formats  
File Format Options

## CREATING YOUR OWN CD

### Getting Started

This chapter explains how to use Dragon Burn to create your own "custom CDs" meaning the content of the CD is based on files that you choose from the drives connected to your Macintosh system. With Dragon Burn, you simply create a layout file that contains the information about the CD you want to create and let Dragon Burn do the rest. These CD layouts can be saved and used again to create additional copies of any CD you create.

### Supported CD Format Types

Using Dragon Burn, you can create four types of CD-R discs: Audio CD, Data CD (CD-ROM), Mixed-Mode CD and CD Extra.

A **CD-ROM** disc contains data only. For example, when you back up all the data files from your hard disk to CD, the disc that will be created is a CD-ROM disc. When creating a Data CD, you can also choose the file format for the completed CD. This can be the standard Macintosh file format (HFS), the ISO9660 file format (used by Windows-based computers), or even a combination of the two formats on the same CD.

An **Audio CD** disc contains only digital audio information. The sources of digital audio are Audio CD (music or songs) on a disc in a CD-ROM drive, Wave, mp3 and AIFF files on your hard disk.

A **Mixed Mode CD** contains both data and digital audio. Data is recorded on the first track, while audio is on tracks 2 to 99 of the same disc.

A **CD Extra**, also known as CD Plus or Enhanced CD, includes two sessions with the first session containing up to 98 audio tracks and the second session containing a data track written in the CD-ROM XA format.

### Creating a Data CD

With Dragon Burn, you can easily make copies of any files and folders on your Macintosh. You can use the Finder to drag-and drop your files and folders onto the Dragon Burn Layout window, or you can use the Select File or Folder dialog box to select the files and folders that you want.

Dragon Burn supports both CD-R (write once) and CD-RW (write and then re-write) media. This makes Dragon Burn quick and easy to use for making archive copies of your computer data (using CD-R media), as well as backup copies that can be updated (using CD-RW media).



#### To create a Data CD(CD-ROM):

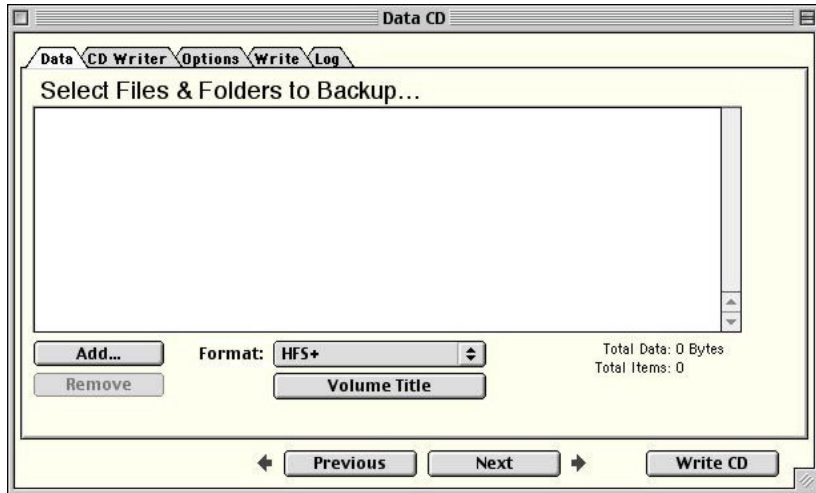
1. If you haven't already done so, start the Dragon Burn application. When you first start Dragon Burn, the Dragon Burn window appears on the screen.

If the Dragon Burn window is not currently on the screen, choose New Layout from the File menu.

2. Click the Data CD icon to open the "Data CD" window. A new, Untitled Layout window appears.

## CREATING YOUR OWN CD

3. In the Control Tabs that appear at the top of the Layout window, the Data tab is selected automatically. The Data pane is used to list the files and folders that will be written onto the CD. There are two ways to choose your files and folders in the Data pane:



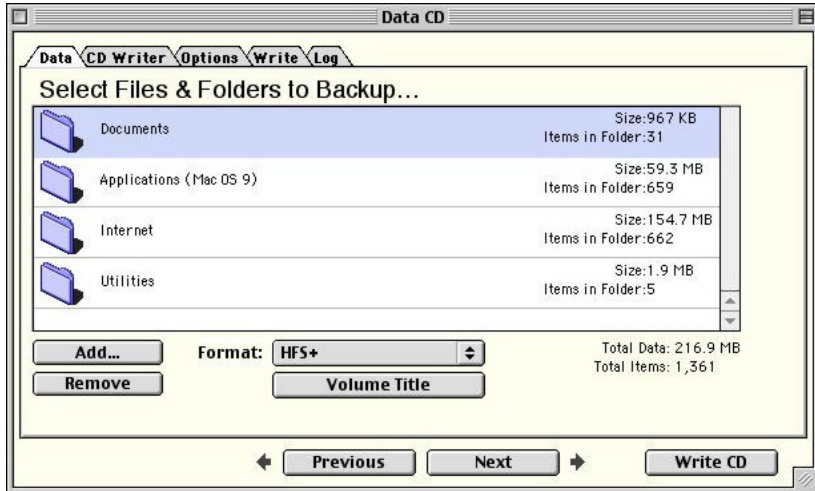
**Drag and drop** files and folders from the Finder. Simply drag the files and folders that you want into the Data pane, and release the mouse button. The files and folders that you have selected appear as a scrolling list in the Data pane.

*or:*

**Click Add... button** to select files and folders from the Finder. If necessary, click the Open button to open folder(s). Then, click to select the file or folder, and click the Choose button to include it in the Data pane.

## CREATING YOUR OWN CD

- When you have added the files and folders that you want to include on the CD, the Layout window will display a list of those items, as shown in the following diagram:



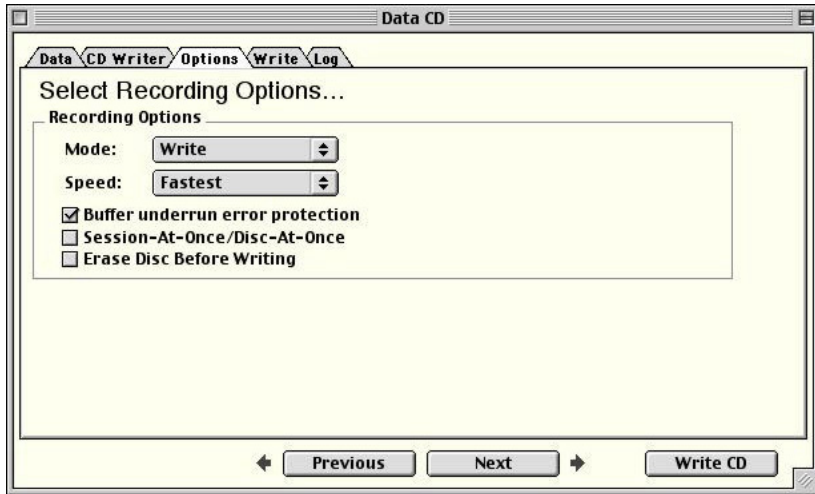
If you've accidentally added a file or folder that you do not want to include on the CD, click to select the item, and then click the Remove Item button.

### Note:

- As you add files and folders to the list, the total combined size of the files and folders appears in the lower-right corner of the Data pane. Make sure that the combined size of the files and folders does not exceed the capacity of your CD media (generally, 1% less than the rated maximum capacity of the CD. For example, if the CD is rated for a maximum of 650MB, you should not try to write more than 644MB).
- When you are satisfied with the list of files and folders for your new CD, click the CD Writer tab.  
If your CD-writer does not appear in the list of recorder devices, click the Rescan button. Dragon Burn will then display a list of drives connected to your Macintosh system.
- Press the Eject button on your CD-writer drive, and insert a blank (recordable) CD into the drive tray. Press the Eject button a second time to close the drive tray, and make the blank CD available for use.

## CREATING YOUR OWN CD

- Click the Options tab. The Options pane appears, as shown in the following diagram:



- The first time** you create a particular kind of CD (audio, data, etc.), choose the Simulate Only mode. This will cause Dragon Burn to use your Macintosh and the CD-writer mechanism to go through all the actions of making a CD *without actually recording to the CD*. Once Dragon Burn has successfully "simulated" the recording, you will return to this step and select the Write mode to create the actual CD.

If you want to specify a recording speed, click on the Recording Speed pop-up menu, and choose the setting that you want to use. The default setting is "Fastest," which sets the CD-writer to record at the fastest speed. Do not choose a speed faster than the highest rating for your particular CD-writer. More information about choosing a different speed for your CD-writer appears in the section entitled [Troubleshooting](#).

The other settings available in this pane are described in the section entitled [Options Settings](#).

- Click the Write tab.
- If any items are listed in the Unresolved Issues area of the Write pane, they must be corrected before you proceed. Clicking the Show button automatically takes you to the Layout pane where you make the setting for the issue that needs to be resolved.
- Click to choose Write Session or Write Disc:

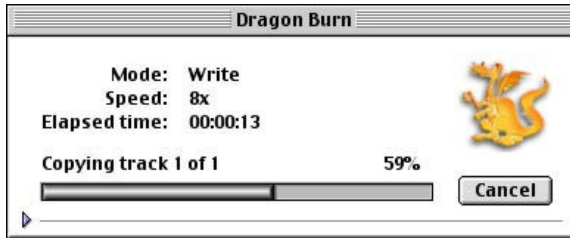
**Write Session.** This setting instructs Dragon Burn to write the contents of your source CD as a new volume on the destination disc. Depending upon the size of your source CD, this may leave space available for subsequent recording on the CD that you create.

**Write Disc.** This setting instructs Dragon Burn to completely fill your destination CD with the contents of the source CD. This is the normal choice, so that the destination CD becomes a copy of the source CD. This disc is finalized and no more data may be added to that CD.

## CREATING YOUR OWN CD

You can find more information about the differences between Write Session and Write Disc in the [Glossary](#).

11. Dragon Burn begins writing to the CD inserted in your CD-writer drive. A progress window appears, as shown in the following diagram:



12. When Dragon Burn is finished creating your custom CD, the completed disc will eject from your CD-writer drive. Click the Log tab to view the status of the recording process.

**The first time** you are copying a CD, this Log pane will report the results of the recording simulation. If the Log pane reports "Simulation Successful," [return to step #8](#) and repeat the rest of this procedure from step #8.

This procedure is complete.

At this point, your Data CD is complete and ready for use. You should review the contents of the Log pane, and make sure that Dragon Burn hasn't reported any Errors or Warnings that relate to the CD you've created.

If you want to create a second (or subsequent) copy of the same CD, click the Write CD button that appears in the Log pane.

If Errors or Warnings were reported in step #12, refer to the [Troubleshooting](#) section (in Chapter 4: Reference).

### Note:

- ☛ If you close the Layout window or quit Dragon Burn, you are prompted to save the settings you have made in the Layout window. This is the same as saving a Layout, as described in the following section.

## CREATING YOUR OWN CD

### Saving a CD Layout

Once you've made any settings in a Layout window, you can save those settings for future use. For example, the previous procedure explained how to use Dragon Burn to backup data to a Data CD. You can save all of those settings as a CD Layout, and use them to quickly make future backup copies of the same files and folders.

You can save as many different CD Layouts as you want. For example, you might save a Layout for backing up business files, and then specify different Layout to backup image files.



#### To save your CD Layout:

1. With a Layout window on the screen, make changes to any of the settings in any of the Control Tab panes.

#### Note:

☛ You do not actually have to record a CD. Simply make the settings that you want to use for recording a CD.

2. Choose Save Layout or Save Layout As... from the File menu.
3. Enter a name for the Layout.
4. If you want to save the Layout in a different location, navigate to the volume and folder where you want to save the Layout.
5. Click the Save button.

At this point, all of the settings in the current Layout window are saved, and can easily be opened and used for a future session with Dragon Burn.

### Opening a Saved CD Layout



#### To open and use a saved CD Layout:

1. Choose Open Layout from the File menu.
2. Click to choose the Layout file that you want to use. If necessary, navigate to the folder that contains the Layout file.
3. Click the Open button. The Layout window is displayed with all of the settings you specified when you saved the Layout.

At this point, the Layout window is open and ready for use. You can use the settings in your Layout file, or you can make any changes you want for creating a new CD.



## CREATING YOUR OWN CD

### Creating an Audio CD

You can use an Audio CD layout to create a CD comprised of audio files in the AIFF, wave or mp3 file formats or tracks directly from your favorite Audio CD.

You can also use Dragon Burn to specify the pause between the individual audio tracks, and rearrange the order that the tracks are recorded onto the CD.

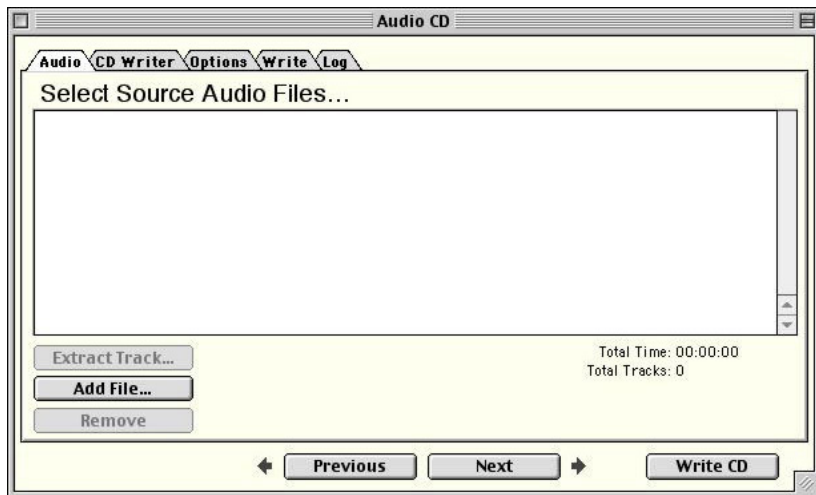


#### To use Dragon Burn to create an Audio CD:

1. If you haven't already done so, start the Dragon Burn application. When you first start Dragon Burn, the Dragon Burn window appears on the screen.

If the Dragon Burn window is not currently on the screen, choose New Layout from the File menu.

2. Click the Audio CD icon to open the "Audio CD" window. A new, Untitled Layout window appears.
3. The Audio pane is used to define the audio files that will be copied to your Audio CD. There are two ways to choose the audio files that you want to add to the Audio pane:



**Drag and drop** an audio file icon from the Finder. Simply drag the icon of the audio file onto the Audio pane, and release the mouse button. The audio files that you have selected appear as a scrolling list in the Audio pane.

*or:*

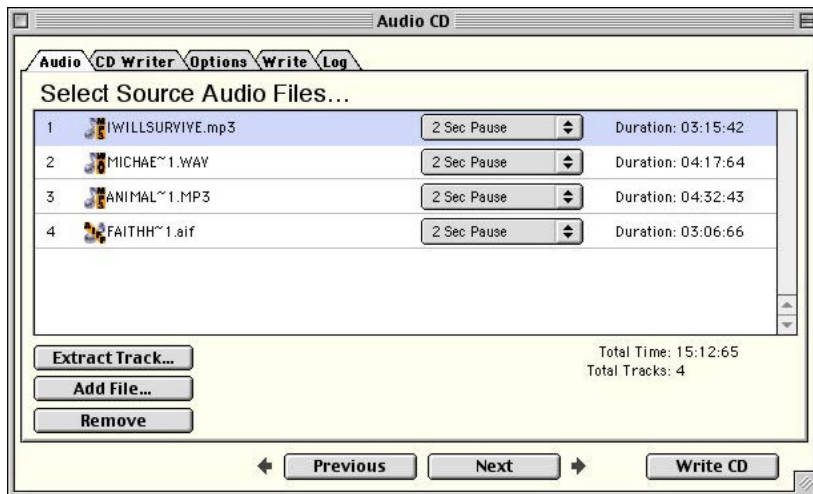
## CREATING YOUR OWN CD

Click the **Add File** button. A dialog box appears, as shown in the following diagram:



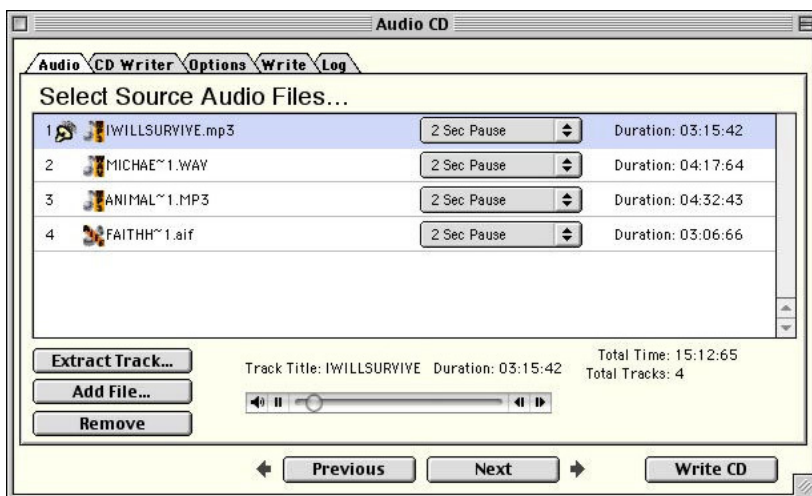
Select the file that you want to add, and then click the Add button to add it to the Audio pane. If you have selected a folder then click the Open button to expand the folder and list its contents.

- Repeat the previous step for all of the audio files that you want to include on your Audio CD. When you're finished, the Audio pane shows a list of the files you have selected, as shown in the following diagram:



## CREATING YOUR OWN CD

5. You can play a track by selecting it and positioning the mouse cursor just to the right of the track number. Click the mouse button when the cursor changes to a speaker to play the track. The dialog below shows the playback control:



### Note:

☛ You can use the playback controls to adjust the volume, play/pause the track and fast forward/reverse the track playback position within the track.

6. Choose the order that you want for the audio files you have selected. To change the order, click on the name of an audio file, and drag it to a different position. Drag the file up to have it appear earlier on the CD; drag the file down to have it appear later on the CD. The audio file that appears at the top of the scrolling list will be the first track of the CD you create.

If you want to remove an audio file that appears in the list, click to select the file, and then click the Remove button.

7. Next, choose the Pause time that you want for the individual audio tracks on your custom CD. Click the pop-up menu that appears with each audio track, and choose the Pause time. You can choose from 0 to 5 seconds Pause time between the selected track and the next track.
8. Click the CD Writer tab, and choose your CD Writer.
9. Click the Options tab, and choose the options that you want for the Audio CD. The same Options selections apply as described in the section entitled [Options Settings](#).

As with any use of Dragon Burn, **the first time** you create a particular kind of CD (audio, data, etc.), choose the Simulate Only mode. This will cause Dragon Burn to use your Macintosh and the CD-writer mechanism to go through all the actions of making a CD *without actually recording to the CD*. Once Dragon Burn has successfully "simulated" the recording, return to this step and select the Write mode option to create the actual CD

10. Insert blank CD media into your CD-writer.

## CREATING YOUR OWN CD

11. Click the Write tab, and choose Write Session or Write Disc, as appropriate.

### Note:

➔ If the combined contents of your audio files are too large to be copied onto a CD, the Unresolved Issues section of the Write pane will display an alert. In this case, click the Show button to return to the Audio pane and remove audio files as appropriate.

12. When Dragon Burn is finished creating your Audio CD, the completed disc will eject from your CD-writer drive. Click the Log tab, and review the contents of the Log pane.

This procedure is complete.

## Creating a Mixed Mode CD

Mixed-Mode refers to the combination of CD-ROM and Audio CD formats on the same disc. A Mixed-Mode disc contains one track of CD-ROM data followed by one or more Audio CD tracks. You can use the Mixed Mode CD Layout window to create a Mixed Mode CD.

The options available for the data and audio tracks are the same as the corresponding layout type. The Mixed Mode layout is comprised of a data tab and an audio tab similar to those you have already used when creating a data or audio CDs. While in the data pane you have the same choices of file formats and when creating the audio portion of the layout you have all the same options and control that you had while creating an audio CD.



### To use Dragon Burn to create a Mixed Mode CD:

1. If you haven't already done so, start the Dragon Burn application. When you first start Dragon Burn, the Dragon Burn window appears on the screen.

If the Dragon Burn window is not currently on the screen, choose New Layout from the File menu.

2. Click the Mixed CD icon to open the "Mixed CD" window. A new, Untitled Layout window appears.
3. In the Control Tabs that appear at the top of the Layout window, the Data tab is selected automatically. The Data pane is used to list the files and folders that will be written onto the CD. There are two ways to choose your files and folders in the Data pane:

**Drag and drop** files and folders from the Finder. Simply drag the files and folders that you want into the Data pane, and release the mouse button. The files and folders that you have selected appear as a scrolling list in the Data pane.

*or:*

Click the **Add File/Folder** button. The Select File or Folder dialog box appears. Use this dialog box to navigate to the location of your files or folders. If necessary, click the Open button to open folder(s). Then, click to choose the file or folder, and click the Choose button to include it in the Data pane.

4. The Layout window will display a list of those items that you have added to your data track layout. If you've accidentally added a file or folder that you do not want to include on the CD, click to choose the item, and then click the Remove Item button.

### Note:

☞ As you add files and folders to the list, the total combined size of the files and folders appears in the lower-right corner of the Data pane. Make sure that the combined size of the files and folders does not exceed the capacity of your CD media (generally, 1% less than the rated maximum capacity of the CD. For example, if the CD is rated for a maximum of 650MB, you should not try to write more than 644MB).

5. When you are satisfied with the list of files and folders for your new CD, click the Audio tab. The Audio pane is used to define the audio files that will be included in the audio track portion of your Mixed Mode CD. There are two ways to choose the audio files that you want to add to the Audio pane:

**Drag and drop** an audio file icon from the Finder. Simply drag the icon of the audio file onto the Audio pane, and release the mouse button. The audio files that you have selected appear as a scrolling list in the Audio pane.

*or:*

Click the **Add File** button. Click to choose the file that you want to add, and then click the Open button to add it to the Audio pane.

6. Repeat the previous step for all of the audio files that you want to include on your Mixed Mode CD. When you're finished, the Audio pane shows a list of the files you have selected.
7. With audio files selected in the Audio pane, you can review file information that relates to the audio files you have selected. Click the triangle that appears to the left of the file name, and additional information will appear in the scrolling list.
8. Choose the order that you want for the audio files you have selected. To change the order, click on the name of an audio file, and drag it to a different position. Drag the file up to have it appear earlier on the CD; drag the file down to have it appear later on the CD. The audio file that appears at the top of the scrolling list will be the first audio track of the CD you create.

If you want to remove an audio file that appears in the list, click to select the file, and then click the Remove button.

9. Next, choose the Pause time that you want for the individual audio tracks on your custom CD. Click the pop-up menu that appears with each audio track, and choose the Pause time. You can choose from zero - five seconds Pause time between the selected track and the next track.
10. Click the CD Writer tab, and choose your CD Writer.

## CREATING YOUR OWN CD

11. Click the Options tab, and choose the options that you want for the custom CD. The same Options selections apply as described in the section entitled [Options Settings](#).

As with any use of Dragon Burn, **the first time** you create a particular kind of CD (audio, data, etc.), choose the Simulate Only mode. This will cause Dragon Burn to use your Macintosh and the CD-writer mechanism to go through all the actions of making a CD *without actually recording to the CD*. Once Dragon Burn has successfully "simulated" the recording, return to this step select the Write mode option to create the actual CD.

12. Insert blank CD media into your CD-writer.
13. Click the Write tab, and choose Write Session or Write Disc, as appropriate.
14. When Dragon Burn is finished creating your Mixed Mode CD, the completed disc will eject from your CD-writer drive. Click the Log tab, and review the contents of the Log pane.

### Note:

- ☛ Check the Unresolved Issues section of the Write pane for any outstanding issues for this layout. In this case, click the Show button to return to the layout pane containing the error and make corrections as appropriate.

This procedure is complete.

## Creating a CD Extra Disc

A Mixed-Mode CD contains data in the first track followed by one or more audio tracks, in a single session. A normal audio CD player attempts to play all tracks in succession. This results in a very loud noise and possible damage when playing a Mixed-Mode CD in a normal CD player. CD Extra, also known as CD Plus or Enhanced CD, is the solution to the above problem. It contains two sessions. The first session contains up to 98 audio tracks and the second session contains a data track written in the CD-ROM XA format.

Playing a CD Extra disc in a normal Audio CD player plays the audio tracks in the first session, and never reads beyond the first session, so the data track is never played and the loud noise and possible damage are avoided. A CD-ROM drive that is able to read a multisession CD, however, reads the last session on the CD, so it finds the data track. The application can then be used to play back the sound.

Again, all options available for the data and audio tracks are the same as the corresponding layout type. A CD Extra layout is comprised of an audio tab and a data tab similar to those you have already used when creating a data or audio CDs. While in the data pane you have the same choices of file formats and when creating the audio portion of the layout you have all the same options and control that you had while creating an audio CD.



### To use Dragon Burn to create a CD Extra disc:

1. If you haven't already done so, start the Dragon Burn application. When you first start Dragon Burn, the Dragon Burn window appears on the screen.  
  
If the Dragon Burn window is not currently on the screen, choose New Layout from the File menu.
2. Click the CD Extra icon to open the "CD-Extra" window. A new, Untitled Layout window appears.

## CREATING YOUR OWN CD

3. In the Control Tabs that appear at the top of the Layout window, the Audio tab is selected automatically. The Audio pane is used to define the audio files that will be included in the audio track portion of your CD Extra disc. There are two ways to choose the audio files that you want to add to the Audio pane:

**Drag and drop** an audio file icon from the Finder. Simply drag the icon of the audio file onto the Audio pane, and release the mouse button. The audio files that you have selected appear as a scrolling list in the Audio pane.

*or:*

Click the **Add File** button. Click to choose the file that you want to add, and then click the Open button to add it to the Audio pane.

4. Repeat the previous step for all of the audio files that you want to include on your CD. When you're finished, the Audio pane shows a list of the files you have selected.
5. With audio files selected in the Audio pane, you can review file information that relates to the audio files you have selected. Click the triangle that appears to the left of the file name, and additional information will appear in the scrolling list.
6. Choose the order that you want for the audio files you have selected. To change the order, click on the name of an audio file, and drag it to a different position. Drag the file up to have it appear earlier on the CD; drag the file down to have it appear later on the CD. The audio file that appears at the top of the scrolling list will be the first audio track of the CD you create.

If you want to remove an audio file that appears in the list, click to select the file, and then click the Remove button.

7. Next, choose the Pause time that you want for the individual audio tracks on your custom CD. Click the pop-up menu that appears with each audio track, and choose the Pause time. You can choose from zero – five seconds Pause time between the selected track and the next track.
8. When you are satisfied with the list of audio files for your new CD, click the Data tab. The Data pane is used to list the files and folders that will be written onto the CD. There are two ways to choose your files and folders in the Data pane:

**Drag and drop** files and folders from the Finder. Simply drag the files and folders that you want into the Data pane, and release the mouse button. The files and folders that you have selected appear as a scrolling list in the Data pane.

*or:*

Click the **Add File/Folder** button. The Select File or Folder dialog box appears. Use this dialog box to navigate to the location of your files or folders. If necessary, click the Open button to open folder(s). Then, click to choose the file or folder, and click the Choose button to include it in the Data pane.

## CREATING YOUR OWN CD

9. The Layout window will display a list of those items that you have added to your data track layout. If you've accidentally added a file or folder that you do not want to include on the CD, click to choose the item, and then click the Remove Item button.

### Note:

☞ As you add files and folders to the list, the total combined size of the files and folders appears in the lower-right corner of the Data pane. Make sure that the combined size of the files and folders does not exceed the capacity of your CD media (generally, 1% less than the rated maximum capacity of the CD. For example, if the CD is rated for a maximum of 650MB, you should not try to write more than 644MB).

10. Click the CD Writer tab, and choose your CD Writer.
11. Click the Options tab, and choose the options that you want for the custom CD. The same Options selections apply as described in the section entitled [Options Settings](#).

As with any use of Dragon Burn, **the first time** you create a particular kind of CD (audio, data, etc.), choose the Simulate Only mode. This will cause Dragon Burn to use your Macintosh and the CD-writer mechanism to go through all the actions of making a CD *without actually recording to the CD*. Once Dragon Burn has successfully "simulated" the recording, return to this step and select the Write mode option to create the actual CD.

12. Insert blank CD media into your CD-writer.
13. Click the Write tab, and choose Write Session or Write Disc, as appropriate.
14. When Dragon Burn is finished creating your Mixed Mode CD, the completed disc will eject from your CD-writer drive. Click the Log tab, and review the contents of the Log pane.

### Note:

☞ Check the Unresolved Issues section of the Write pane for any outstanding issues for this layout. In this case, click the Show button to return to the layout pane containing the error and make corrections as appropriate.

This procedure is complete.



## CREATING YOUR OWN CD

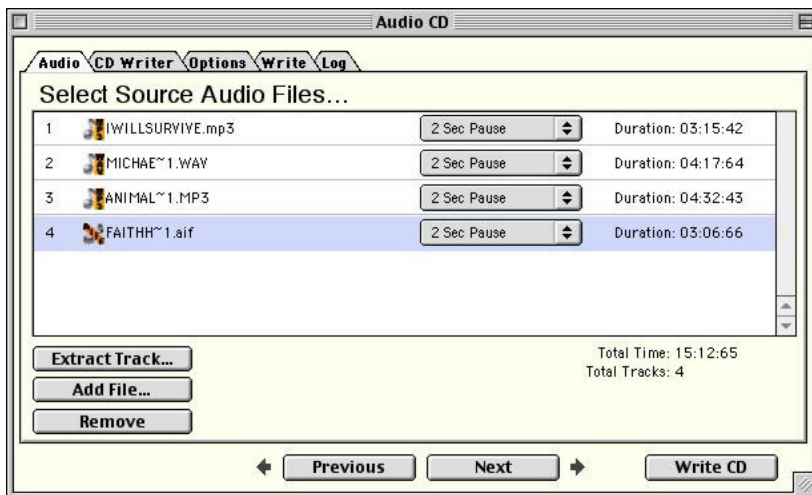
### Extracting Audio Files

You can create AIFF sound files from your audio track on CD or from out format sound files like mp3 and Wave. In addition, you can also create a wave file from an AIFF audio file.



To extract an AIFF file from an audio track or file:

1. Click the Audio Tab from the Audio CD layout.



2. Select the track to extract.
3. Select the location and name of the new file using the Save Audio File As dialog.
4. Click Save to begin the extraction process.
5. Click OK when the Extraction Complete dialog is displayed.

This procedure is complete.

### Note:

Dragon Burn will create a wave file when the source file is in the AIFF format.

### Displaying Disc Information

Additional information about the contents and status of a CD can be displayed from the CD Writer Tab of any layout or the Source Tab of the Copy a CD layout.

#### *Disc Type*

The disc type can be one of the following: (1) CD-DA or CD-ROM disc; (2) CD-I disc; (3) CD-ROM XA disc.

#### *Disc Status*

1. Blank Disc: a blank CD-R disc.
2. Recordable Disc: not a blank disc but you can still use this disc to record. That means the disc has not been finalized yet.
3. Unrecordable Disc: either a conventional CD or Disc-At-Once CD-R disc. You cannot use this disc to record.

## CREATING YOUR OWN CD

### *Used Space*

This field shows the used space on the disc, as expressed in “minutes: seconds: frames.”

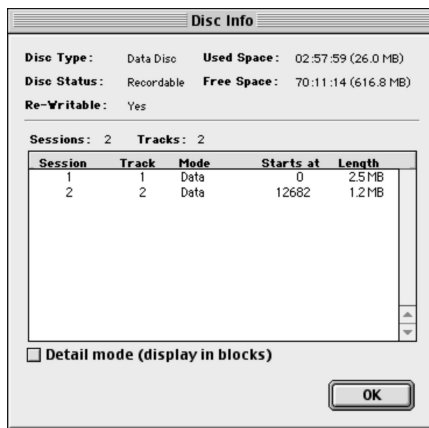
### *Free Space*

This field shows the free and available space on the disc, as expressed in “minutes: seconds: frames”. If you insert a finalized this field will be zero, indicating no free space and the status will be displayed as unrecordable.

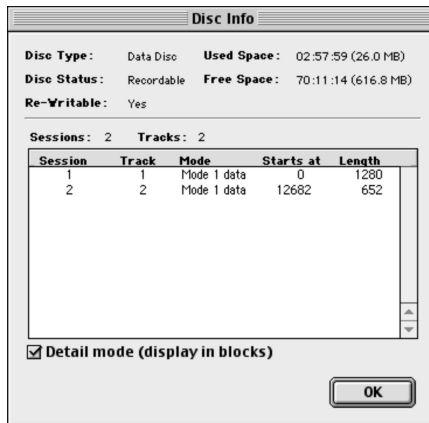


To display the status of a CD-R/RW disc:

1. Select the CD burner that contains the disc you wish to check the status.
2. Click the Disc Info button.



3. Check the Detail Mode to see additional details about the disc.



4. Click Ok to close the Disc Info dialog.

This procedure is complete.

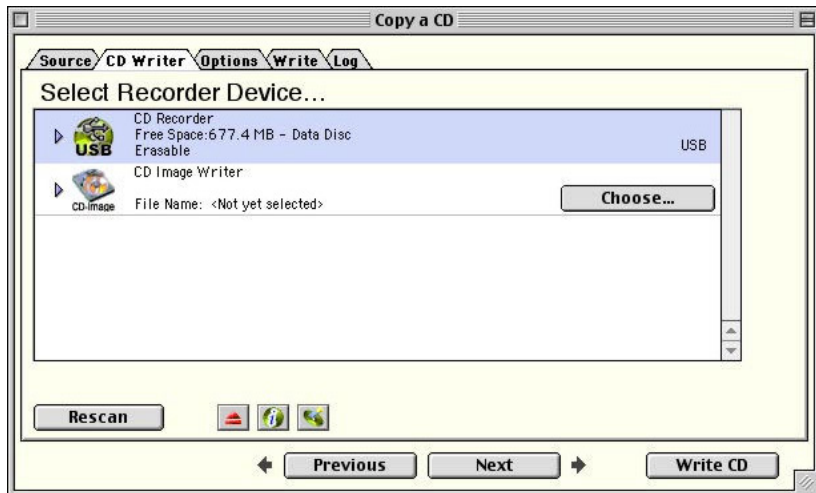
## CREATING YOUR OWN CD

### Using Re-Writable Discs

If you're working with a CD-RW (CD-ReWritable) disc, Dragon Burn offers the option of erasing any previous data that may be on the disc before making your CD. Be aware that using this option may add considerable time to the process of creating a CD.

 To erase the data on a CD-RW disc when making a CD:

1. Click the CD Writer tab from any open CD layout. The Options pane appears, as shown in the following diagram (Copy CD Layout shown here):



2. Click the Erase Disc button.
3. Choose Full or Quick Erase to erase the CD-RW disc in the selected drive.

This procedure is complete.

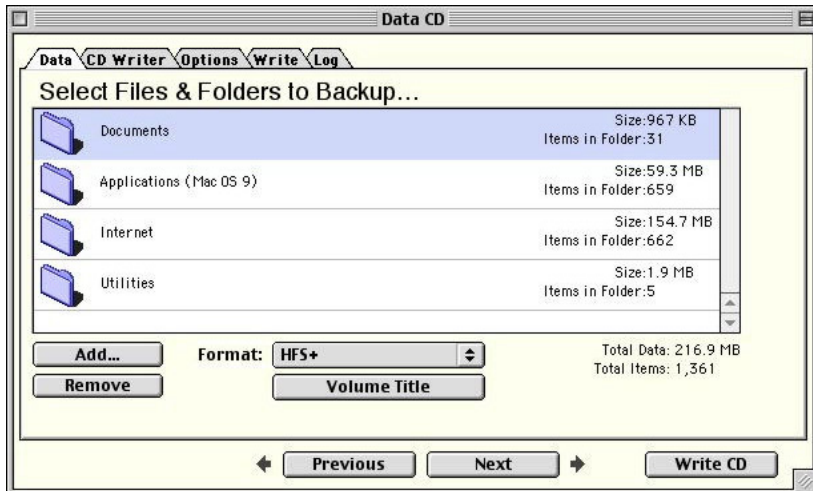
## CREATING YOUR OWN CD

### Specifying File Formats

With Dragon Burn, you can choose the file format that is used for the data on your custom CD. Check boxes appear in the Data pane of the Layout window, and they enable you to choose the data format for the files, folders and audio files that you write on your CD.

➤ To specify a file format for the data on a CD:

1. Click the Data tab from your open Data CD, Mixed Mode CD or CD Extra layout. The Data pane appears, as shown in the following diagram (Data CD Layout shown here):



2. Click to choose the file format options that you want for your custom CD.
3. Proceed to choose any files and folders that you want, CD-writer, and Options that will be used to write your CD.
4. Click the Write tab to activate the Write pane, and write your CD in the normal manner.

This procedure is complete.

## File Format Options

The following file format options are available:

- **MAC Volume.** This setting creates a mountable Macintosh volume on the target CD. These volumes are limited to the space available on the CD media
- **MS-DOS.** This setting defines that the files and folders you have selected in the Data pane will be written in the 8.3 MS-DOS file format.
- **Joliet(MS-DOS/Windows).** The Joliet file system was proposed and implemented by Microsoft. Joliet is based on the ISO9660 (1988) standard.

If a CD is created using the Joliet file system, it may only be read back under Windows 95/Windows NT 4.0 or later, and may not be read back on other platforms. Under the Joliet file system, the number of characters allowed in long file name is up to 64 and the allowed number in a long directory is up to 64 characters. However, the total number of characters for a file name plus its full path cannot exceed 120.

- **HFS.** This setting uses the Macintosh Type and Creator information (associated with Macintosh files), and writes this information into a special area of the CD. The result is that the Macintosh can recognize Macintosh files in the usual manner (so that you can double-click on a file to launch its related application)
- **HFS+.** This setting creates CDs compatible with the Macintosh HFS+ file system. The result is that the Macintosh can recognize Macintosh files in the usual manner (so that you can double-click on a file to launch its related application)
- **Hybrid (HFS/MS-DOS).** This format contains the MS-DOS file information, as well as files in the Macintosh HFS file format. In this case, all of the files that you specify in the Layout window are written *twice* onto the CD that you create: once in the MS-DOS file format and once in the Macintosh HFS file format.
- **Hybrid (HFS+/Joliet).** This format contains the Joliet file information, as well as files in the Macintosh HFS+ file format. In this case, all of the files that you specify in the Layout window are written *twice* onto the CD that you create: once in the Joliet file format and once in the Macintosh HFS+ file format.



# Reference

## **Chapter 4 — Topics of discussion**

Introduction

Contacting NewTech Infosystems, Inc.

Troubleshooting

## REFERENCE

### Introduction

This chapter includes Troubleshooting information, a Glossary, and contact information in case you need additional help for using Dragon Burn.

### Contacting NewTech Infosystems, Inc.

If you have a problem that you cannot resolve, first be sure that you have checked the following:

- Reviewed the contents of this User's Guide
- Checked the Troubleshooting section, and tried the suggestions for the various problems listed in that section.
- Reviewed the contents of the ReadMe file that appears on the *Dragon Burn Software CD*.
- *If you have Internet access:* Refer to our web site at:

**[www.ntius.com](http://www.ntius.com)**

At this site, you will find information about the latest software upgrades and revisions that are available.

### Technical Support



To request assistance from our Technical Support department:

1. Via Email: [support@ntius.com](mailto:support@ntius.com)

Hours: Monday - Friday, 8:00 AM - 5:00 PM (PST)

### Troubleshooting

This section includes troubleshooting information: a series of common questions that relate to the operation of Dragon Burn, and the answers to those questions.

Before you tackle any of the Troubleshooting issues that appear in this section, you should take a moment to review the procedures that appear in this User's Guide. Frequently, what appears to be a problem can easily be solved by carefully following the directions that appear in the procedures.

*My CD-writer doesn't appear in the list of available devices.*

- Make sure that you have turned on the power for your CD-writer. Make sure that the CD-writer is connected to an appropriate power source.
- Check to make sure that your CD-writer is correctly connected to your Macintosh system.

If you're using an internal CD-writer, check that the ribbon cable is firmly seated onto the back of the CD-burner and that you have connected the power cable to the CD-writer.

If you're using an external CD-writer, check that the data cable is firmly connected to your Macintosh, and (the other end) to your CD-writer. With an external SCSI CD-writer, you also need to make sure that the SCSI ID number is set correctly, and that the SCSI termination is correct for your CD-writer. Refer to the Owner's Manual supplied with your SCSI CD-writer for SCSI ID and SCSI termination information.



## REFERENCE

### *Disc is not ready*

- Press the Eject button on your CD-writer, and make sure that a blank CD is inserted in the CD-writer. Press the Eject button a second time to pull the blank CD into the CD-writer.
  - Try a different blank CD. Sometimes, errors in the CD media can result in a "disc not ready" message.
  - Check the connections for your CD-writer. A loose connection can result in a "disc not ready" message.
  - Check the CD-writer. If the manufacturer of the CD-writer included diagnostic software, use that software to confirm that the CD-writer is connected correctly, and is functioning properly.
- 

### *Error Log*

- Try the process again, with a blank CD media. Defective CD media can result in this type of message.
- The CD-writer may be set at too high a speed. As you record a CD, the Progress window has a green bar that shows the amount of memory buffer space available. If that bar recedes completely to the left and disappears, the CD-writer has written data to the disc faster than it could be replenished from the source. Recording at a lower speed usually solves this problem. You may need to use a lower recording speed if any of the following are different from your normal use of Dragon Burn:

**Different source device.** If you choose a different data source device, the device may not be able to deliver data at the speed necessary to write to the CD. For example, an Iomega Zip drive transfers data at a much lower speed than a hard disk drive.

**Different media.** Different brands of blank CD media have different speed capabilities. Make sure the packaging indicates that the media is rated for the recording speed that you have set in the Options pane. Also, be aware that CD-RW (re-writable media) requires a much lower speed than CD-R

- If you're making a CD copy from your CD-ROM drive, try making a Disk Image File. The Disk Image File will be on your hard disk drive, which is many times faster than any CD-ROM drive.
  - If you're making a copy of a CD, the source CD may be copy protected. In this case, Dragon Burn cannot make a copy of the source CD.
-



# Glossary

## **AIFF**

AIFF stands for Audio Interchange File Format. It was developed by Apple Computer, Inc. for storing sounds on a computer. AIFF is a flexible file format, allowing for arbitrary sampling rates, sample size, number of channels, and application-specific formats that may be ignored by other file formats. Dragon Burn supports the AIFF file format only for 44KHz, 16-bit stereo sound files.

## **Blank Media**

Refers to CD media that can be recorded. Blank media is available in two types: CD-R (that can only be recorded once), and CD-RW (that can be recorded, and then re-recorded with different data).

## **CD-DA**

A CD-DA (Audio CD) disc contains tracks with Audio only. This type of disc is defined by the Red Book format standard.

## **CD Extra**

CD Extra, also known as CD Plus or Enhanced CD, includes two sessions with the first session containing up to 98 audio tracks and the second session containing a data track written in the CD-ROM XA format.

## **CD Media**

The CD media is the round plastic disc that fits into your CD-ROM or CD-writer drive.

## **Disc-At-Once**

With Disc-At-Once writing mode, the CD-Recorder laser will not stop until the whole disc recording is finished. In this writing mode, the disc will be closed and there are no link blocks between any two tracks.

## **Hybrid**

A CD that contains two (or more) separate areas, where each area has a different file format. As used with CDs, this usually means an area with Windows-type files, and an area with Macintosh-type files. Such a disc can be used with either type of computer.

## **ISO9660 Format**

A standard CD format that is widely used by Windows-based computers. Macintosh computers can also read CDs that are written in this format.

## **Joliet**

Microsoft implemented the Joliet file system. It is based on the ISO9660 level 3 standard. A CD created under the Joliet file system can only be read back under Windows 95 and Windows NT 4.0 or later. The number of characters allowed in a long file name is up to 64 and the number of characters allowed in a long directory is up to 64 characters. However, the total number of characters of the long file name plus its full path cannot exceed 120.

## **Lead-In Area**

This is a piece of information, laying before each session that contains the TOC (Table of Contents) and other miscellaneous information about the disc and about the recorded tracks.

## **G L O S S A R Y**

### **Lead-Out Area**

To indicate the end of a session, it is closed with an ending, called the Lead-Out.

### **Mixed Mode CD**

A Mixed Mode CD contains a combination of CD-ROM tracks and CD-DA tracks. A Mixed Mode disc has a CD-ROM track as the first track and CD-DA on the following tracks.

### **MPEG-1, Layer 3 (.mp3)**

MPEG-1, Layer 3, or MP3 as it is more commonly known, is the portion of the MPEG-1 specification dealing with the recording of audio information to a file. This standard is gaining popularity on the Internet. Currently, most CD drives will not play this audio format directly.

### **Session**

Session refers to data written to a CD during the span of a single recording. It is an area on the disc that consists of a Lead-In Area, a Program Area and a Lead-out Area.

### **Session-At-Once**

With Session-At-Once writing mode, the CD-Recorder's laser does not stop until the all data from the current session is written to disc. Session-At-Once is related to the process of recording multisession discs. See Multisession.

### **Table of Contents (TOC)**

The Table of Contents (TOC) contains information about the disc and tracks. When you close the current session, the Table of Contents will be written in the Lead-In Area. With an unfinished recording of the disc, however, the TOC cannot be written to the disc.

### **Track-At-Once**

With Track-At-Once writing mode, the CD-Recorder will record one track at a time. In between every track, the CD-Recorder's laser stops while the hard disk prepares the contents of the next track.

### **Wave**

A Wave (.wav) file is a file that stores analog signals (sounds) in a digital format that can be interpreted by a computer.

### **Write Disc**

With Dragon Burn, the Write Disc button writes the selected files onto the CD media, and includes special coding so that the resulting CD is completely filled and cannot be used again. Even if you select only a few small files, the Write Disc button will code the CD in such a way that it cannot hold any more data.

### **Write Session**

Write Session differs from Write Disc in that it commands Dragon Burn to write the selected files as a "session" leaving space available on the CD for subsequent session(s). If a CD has multiple sessions, each session will appear in the Finder with a separate icon. With the Write Session button, you can create any number of sessions on a CD (up to the limit of available free space on the media).

# Index

<b>A</b>		<b>J</b>	
About Copying CDs .....	9	Joliet.....	45
<b>B</b>		<b>L</b>	
Blank Media .....	45	Lead-In Area .....	45
<b>C</b>		Lead-Out Area .....	46
CD Copy Overview .....	10	<b>M</b>	
CD Copy Procedure .....	11	Making a CD with a Disc Image File.....	18
CD Extra .....	45	Mixed Mode CD .....	46
CD Media .....	45	MPEG-1, Layer 3 (.mp3).....	46
CD-DA .....	45	<b>O</b>	
Creating a CD Extra Disc .....	32	Opening a Saved CD Layout.....	26
Creating a Data CD.....	21	Options Settings.....	15
Creating a Disc Image File .....	16	<b>S</b>	
Creating a Mixed Mode CD.....	30	Saving a CD Layout.....	26
Creating an Audio CD .....	27	Session .....	46
<b>D</b>		Session-At-Once .....	46
<i>Disc Info &amp; Tools</i>		<i>Sessions &amp; Tracks</i>	
<i>Disc Status</i> .....	35	<i>Free Space</i> .....	36
<i>Disc Type</i> .....	35	<i>Used Space</i> .....	36
Disc-At-Once.....	45	Specifying File Formats.....	38
Displaying Disc Information.....	35	Starting Dragon Burn.....	9
Dragon Burn		Supported CD Format Types .....	21
Features .....	3	<b>T</b>	
Software Installation .....	5	Table of Contents (TOC) .....	46
System Requirements .....	4	<b>Technical Support</b> .....	43
<b>E</b>		Track-At-Once .....	46
Extracting Audio Files .....	35	Troubleshooting .....	43
<b>F</b>		<b>U</b>	
File Format Options .....	39	Using a CD Copy Layout.....	16
<b>H</b>		Using a Disc Image File.....	16
How to Use This Guide .....	3	Using Re-Writable Discs .....	37
Hybrid Format .....	45	Using the Control Tabs.....	10
<b>I</b>		<b>W</b>	
ISO9660 Format .....	45	Wave.....	46
		Write Disc .....	46
		Write Session .....	44, 46